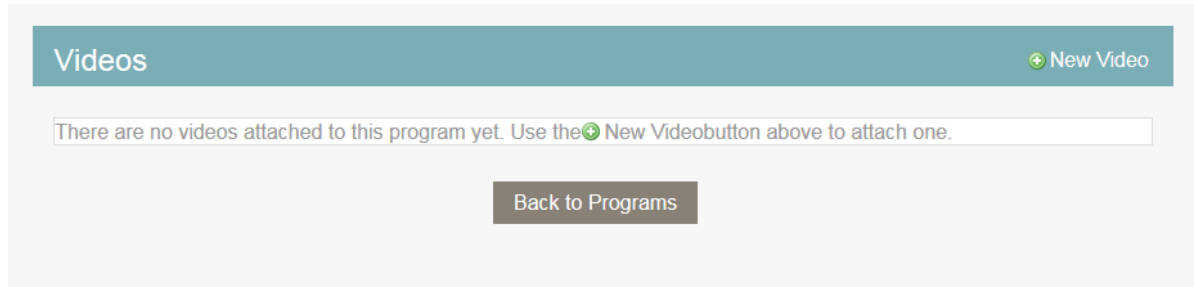


Athena CE Programs: Editing a Program: Videos Tab

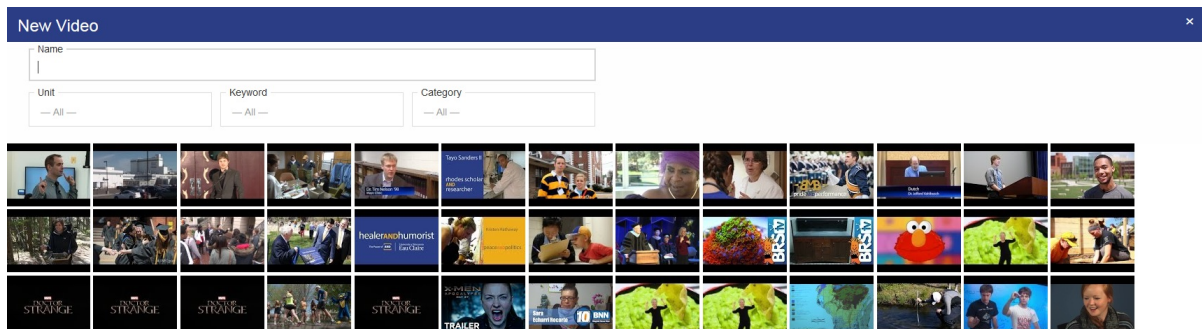
Last Modified on 02/27/2020 1:02 pm CST

1. Click **New Video** to start adding videos for this program.

NOTE: For help adding a new video, see [Adding a Video](#) and [Editing a Video](#).



2. Search for the videos you wish to use to add into a video gallery for the program. Videos are automatically saved to the program once selected.



3. Proceed to the **Resources** tab.

For in-depth instructions on each section of a program:

- [Adding a Program](#)
- [Content](#)
- [Info](#)
- [Registration](#)
- [Organize](#)
- [Instructors](#)
- [Series](#)
- [Discounts](#)
- [Dates](#)
- [Testimonials](#)
- [Images](#)
- [Videos](#)

- [Resources](#)
- [Sponsors and Partners](#)
- [Deactivating and Activating a Program](#)

Still need help?

If you have questions related to this article, please contact the LTS Help Desk at [715-836-5711](tel:715-836-5711) or helpdesk@uwec.edu.